

If you can't see this alert properly, view this email in your browser



Discussion of Objections on E1 Plans Scheduled for October 4 and 18

02 September 2021

On August 29, the Supreme Planning Council of the Civil Administration issued new dates for convening the discussion on objections to the E1 plans for 3412 housing units: October 4 and 18. Having originally attempted to schedule the discussion for August 9, the planning council postponed it, claiming it was unable to find a mutually convenient time for all parties involved.

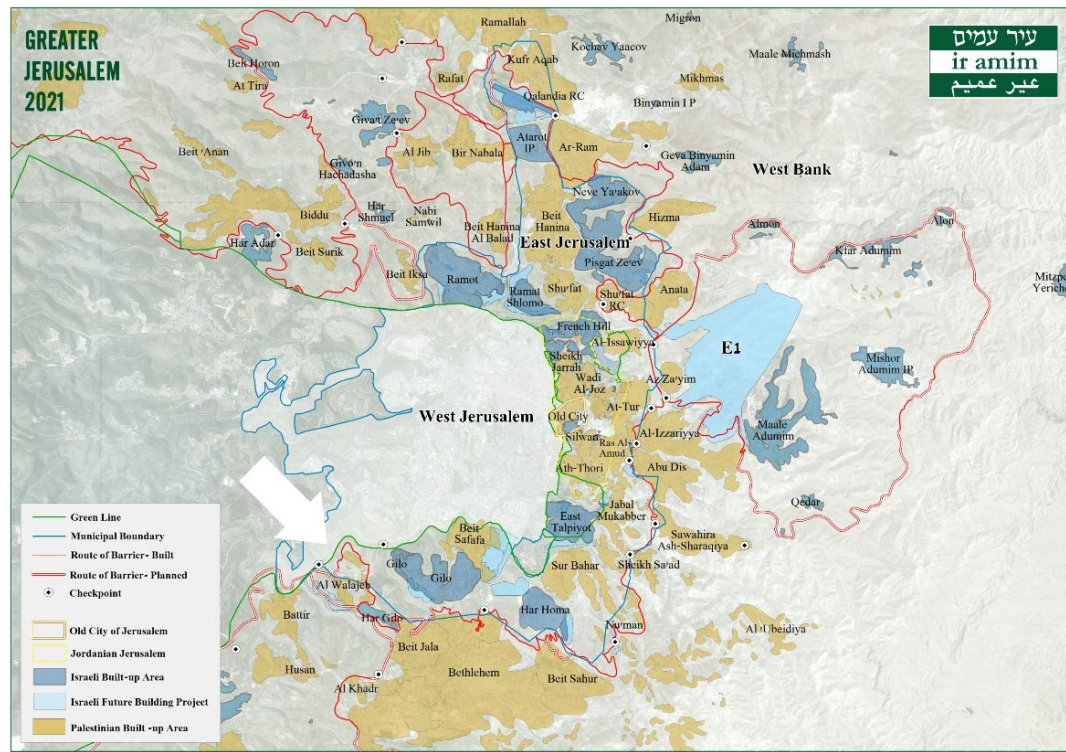
The discussion of objections constitutes one of the final stages in the plans' approval. **While it is unclear who initiated the discussion, it is unlikely to have happened without the knowledge and approval of both the Israeli Minister of Defense and Prime Minister.** Advancement of the plans comes just days after Israeli Prime Minister Bennett met with US President Biden in Washington where Biden underscored the necessity to refrain from measures which inflame tensions and reaffirmed his support for the two-state solution.

Construction in E1 has long been regarded as a death blow to the two-state framework and threatens to displace roughly 3,000 Palestinians living in small Bedouin communities in the area, including Khan al-Ahmar.

For years, the E1 plans had been frozen due to strong bipartisan US and international opposition until [former Prime Minister Netanyahu promoted the plans last year](#) as part of his 2020 re-election bid and within the framework of the government's accelerated steps towards de-facto annexation. Although the new Israeli government claimed that its policies would be different, it is continuing to advance the same process.

The two E1 plans (TPS YOSH 420-4-7, TPS YOSH 420-4-10) for a total of 3,412 housing units are designated for an area of over 2,100 dunams situated between East Jerusalem and the Maaleh Adumim settlement. Construction in E1 would create Israeli territorial contiguity between these areas, effectively bisecting the West Bank and driving a wedge between the Ramallah and Bethlehem areas. It would likewise fragment the contiguous Palestinian space between East Jerusalem and the West Bank necessary for a viable

[Objections to the plans](#) were submitted by numerous Palestinian communities and Israeli organizations, including [Ir Amim](#), [Peace Now](#) and the [Association of Environmental Justice in Israel](#). Six leading Israeli academics from the fields of planning and geography joined the organizations' joint objection as well as over 2,000 Israeli citizens who likewise added their signatures.



E1 is denoted in light blue towards the right-hand side of the map.

Please address all inquiries to:

Amy Cohen
 Director of International Relations & Advocacy
 Ir Amim (City of Nations/City of Peoples)
 Jerusalem
amy@ir-amim.org.il



Share



Tweet



Forward

Copyright © 2021 Ir Amim, All rights reserved.

Want to change how you receive these emails?
You can update your preferences or unsubscribe from this list.

